

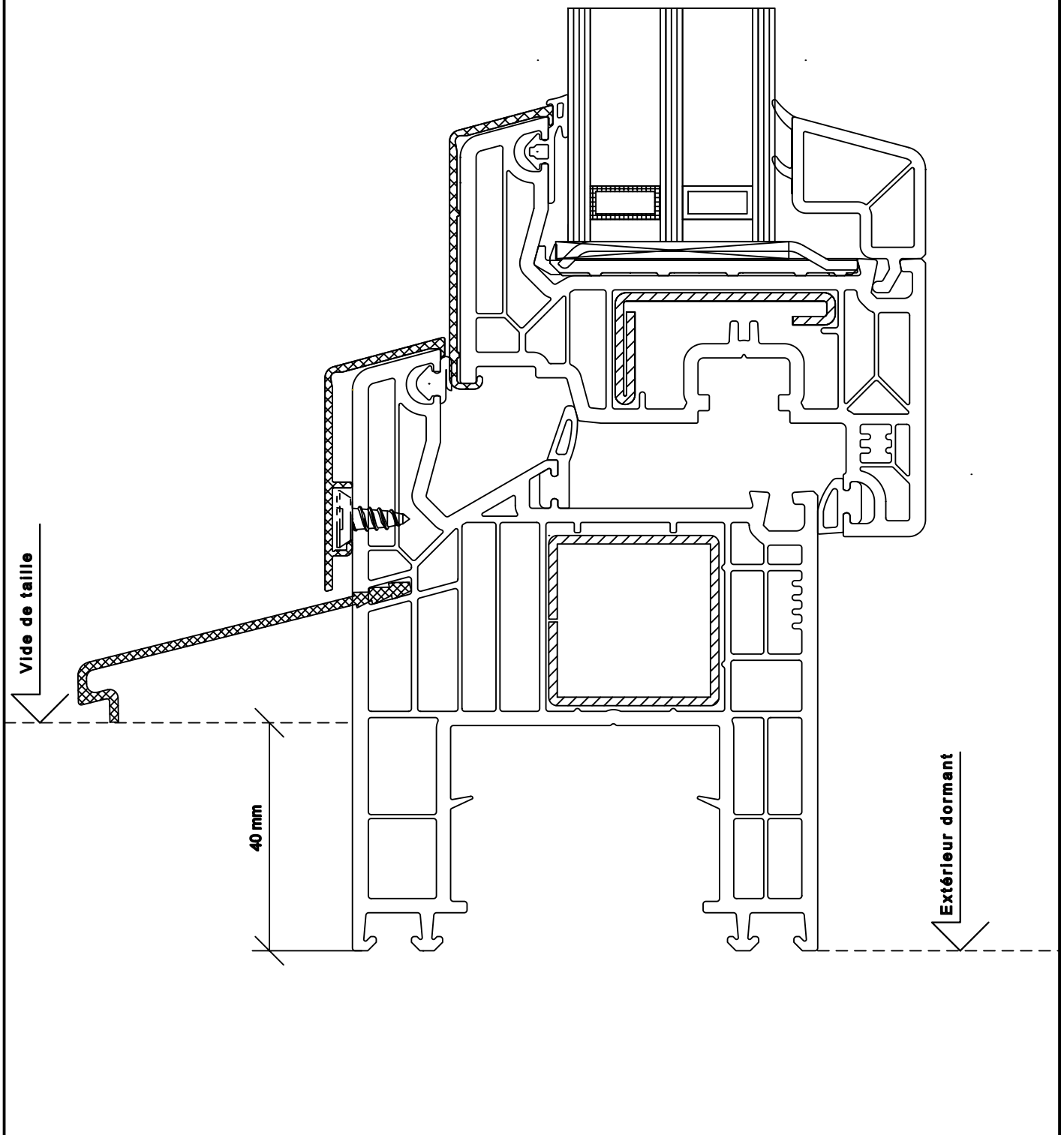
**SOFTLINE - MD 82mm**

Dormant 101.296 + 104.366

Echelle  
1:1

20.09.2012

Soft-8001 alu  
(Verre 36mm)



**SOFTLINE - MD 82mm**

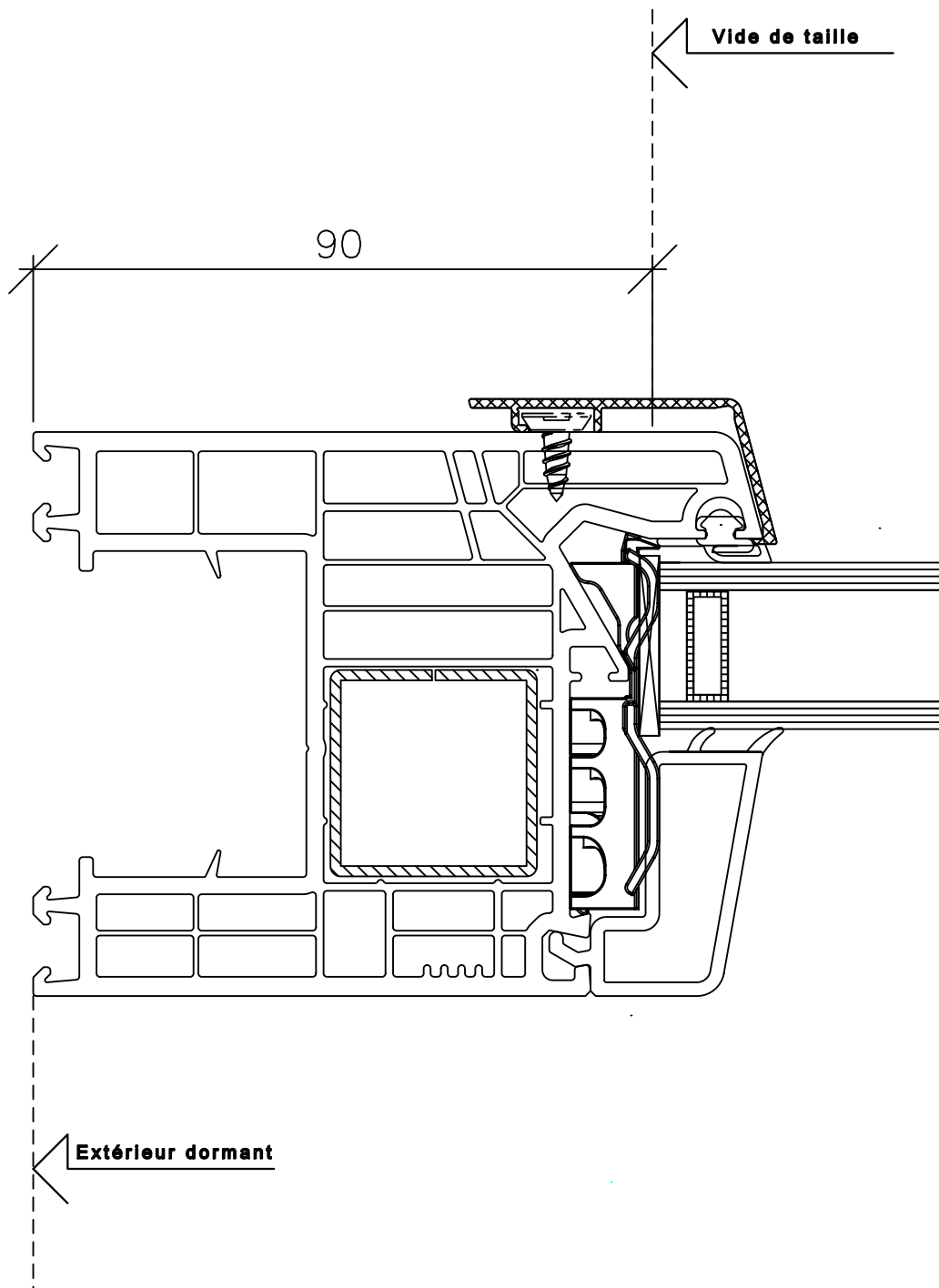
Dormant 101.296 + 104.366

Vantail 103.340 + 104.358

Echelle  
1:1

20.09.2012

Soft-8100 alu  
(Trilverre 36mm)



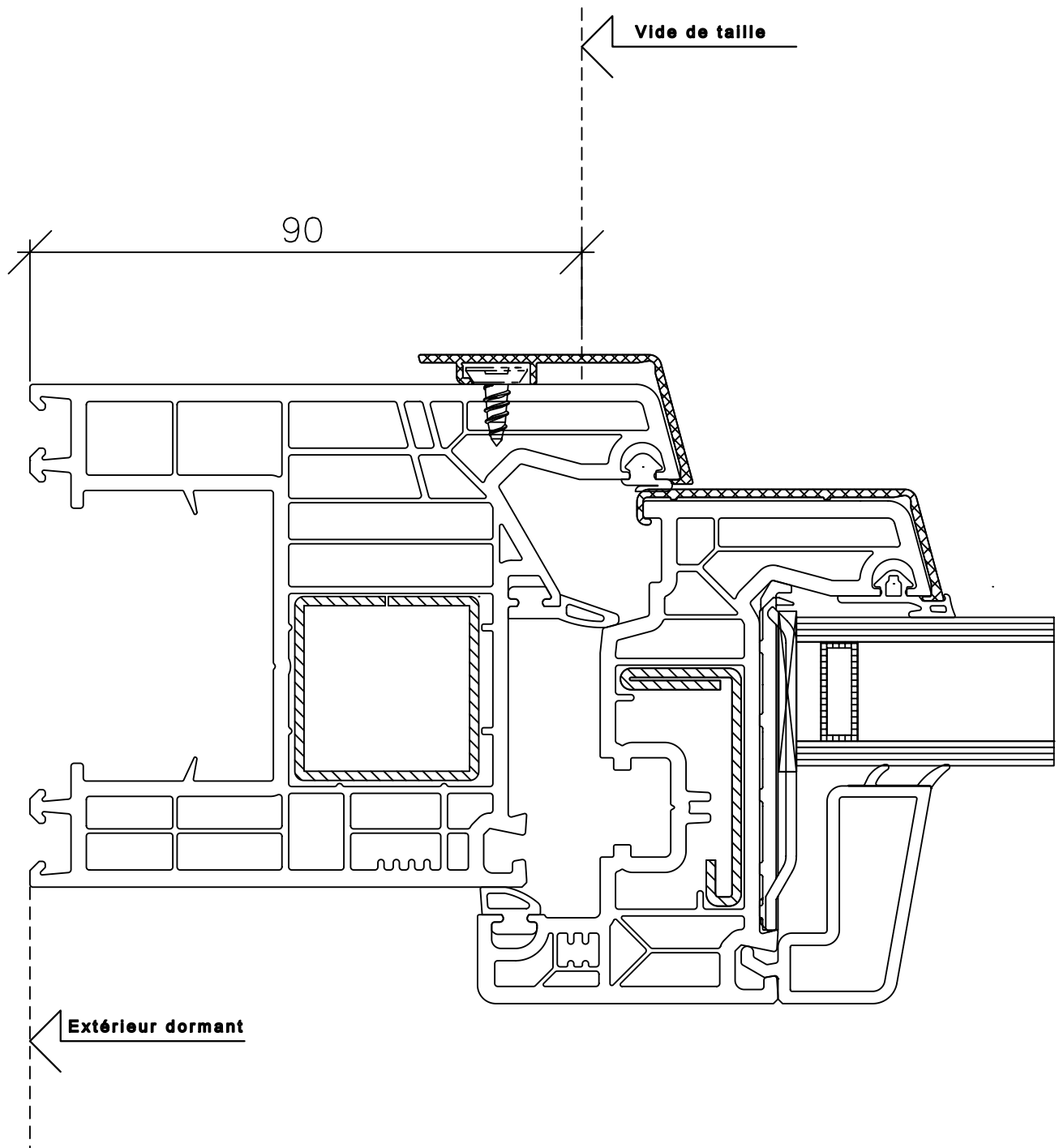
**SOFTLINE - MD 82mm**

Dormant 101.296 + 104.366

Echelle  
1:1

06.11.2014

Soft-8021 alu  
(Verre 24mm)



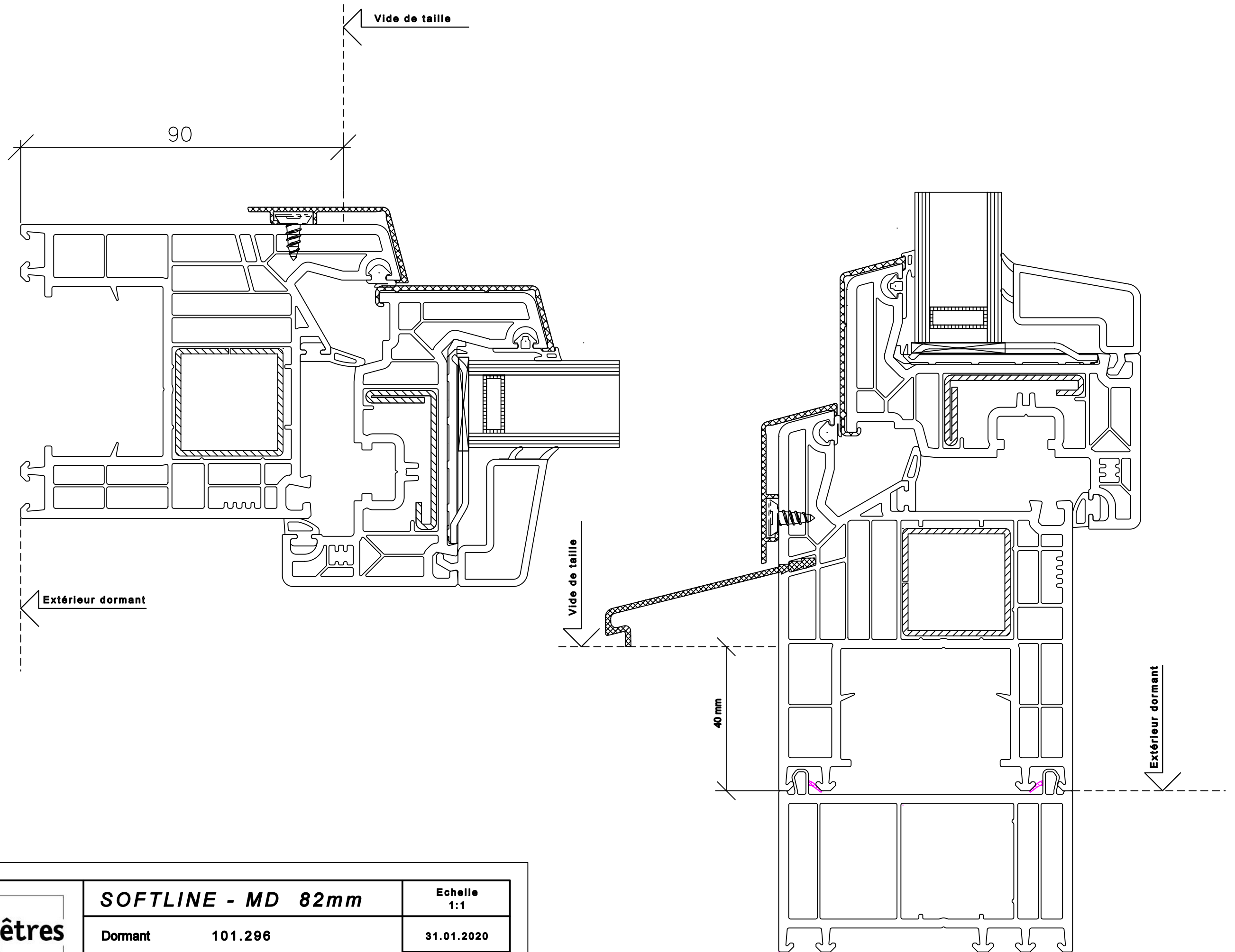
**SOFTLINE - MD 82mm**

Dormant 101.296 + 104.366  
Vantail 103.340 + 104.358

Echelle  
1:1

06.11.2014

Soft-8120 alu  
(Verre 24mm)



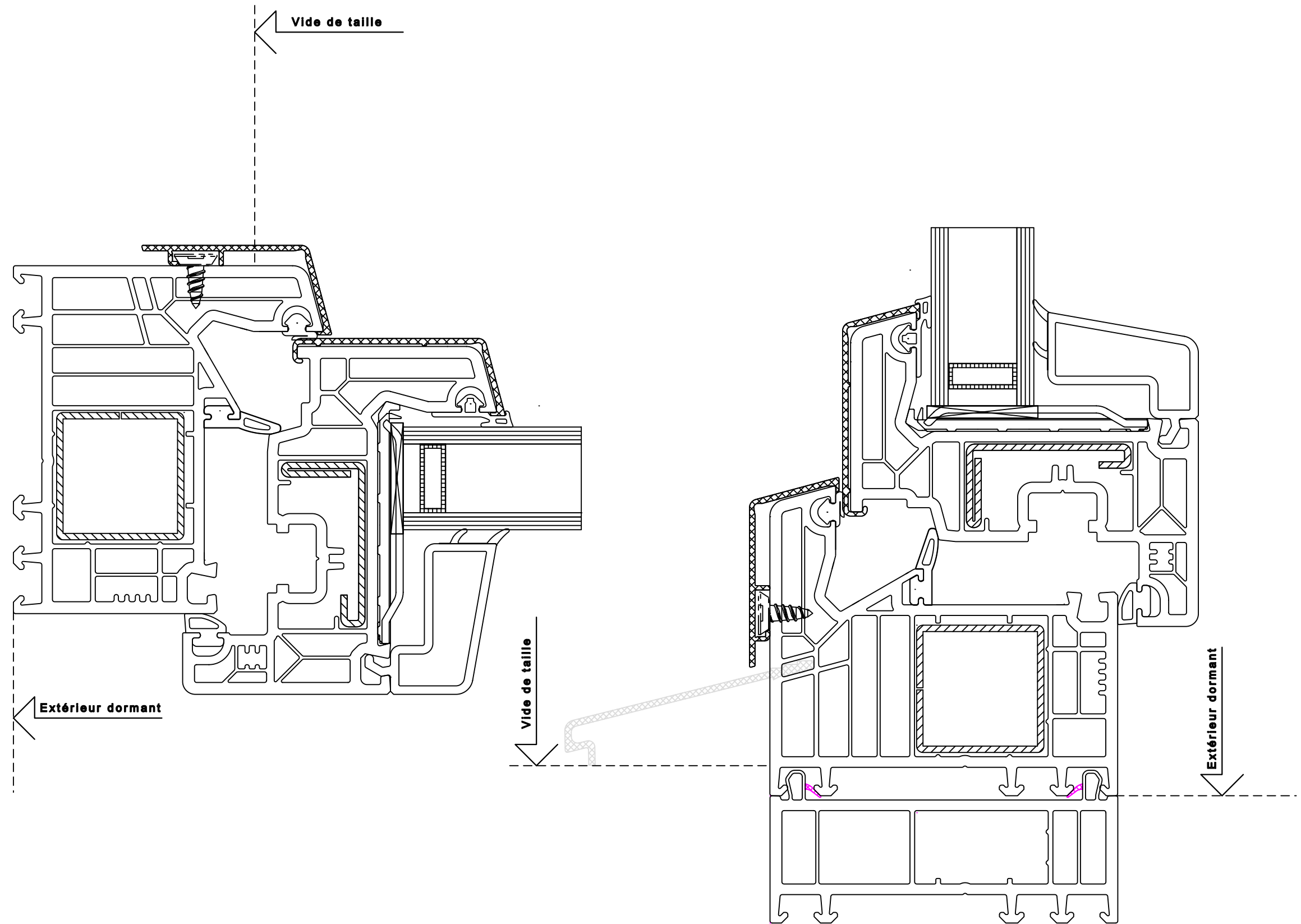
**SOFTLINE - MD 82mm**

Dormant	101.296
Vantail	103.340

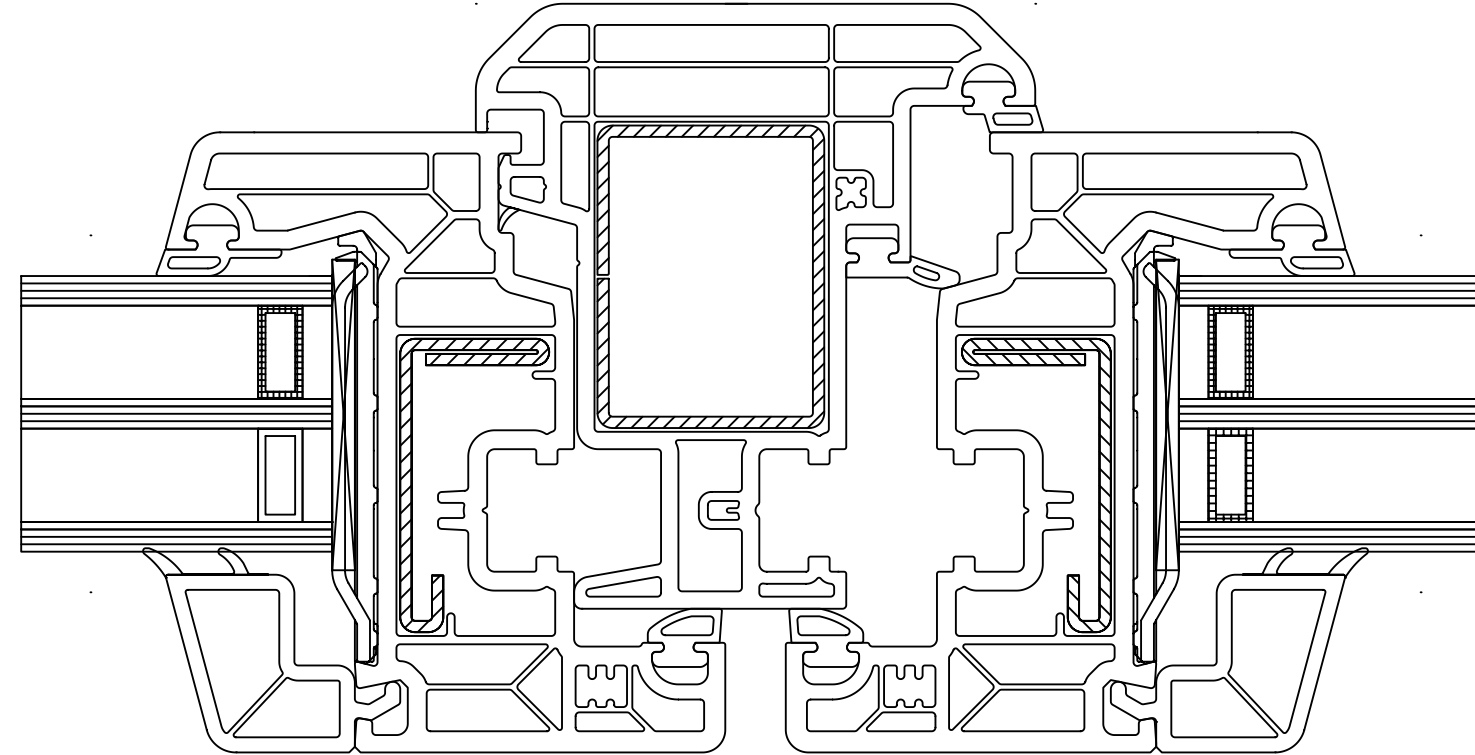
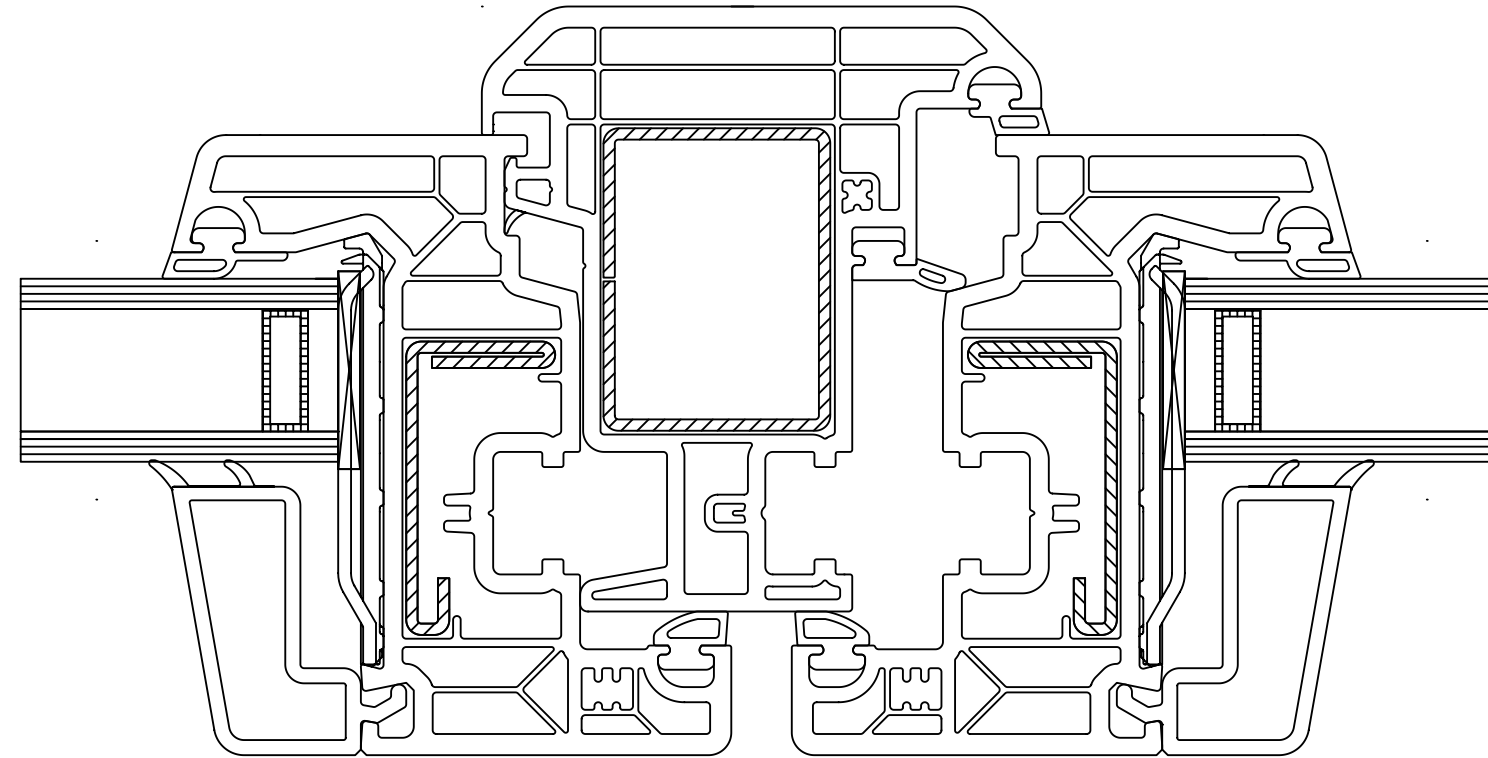
Echelle  
1:1

31.01.2020

Soft-8000\_  
recharge



<b>SOFTLINE - MD 82mm</b>		<b>Echelle 1:1</b>
Dormant	101.295	29.09.2020
Vantail	103.340	Soft-8010_ recharge



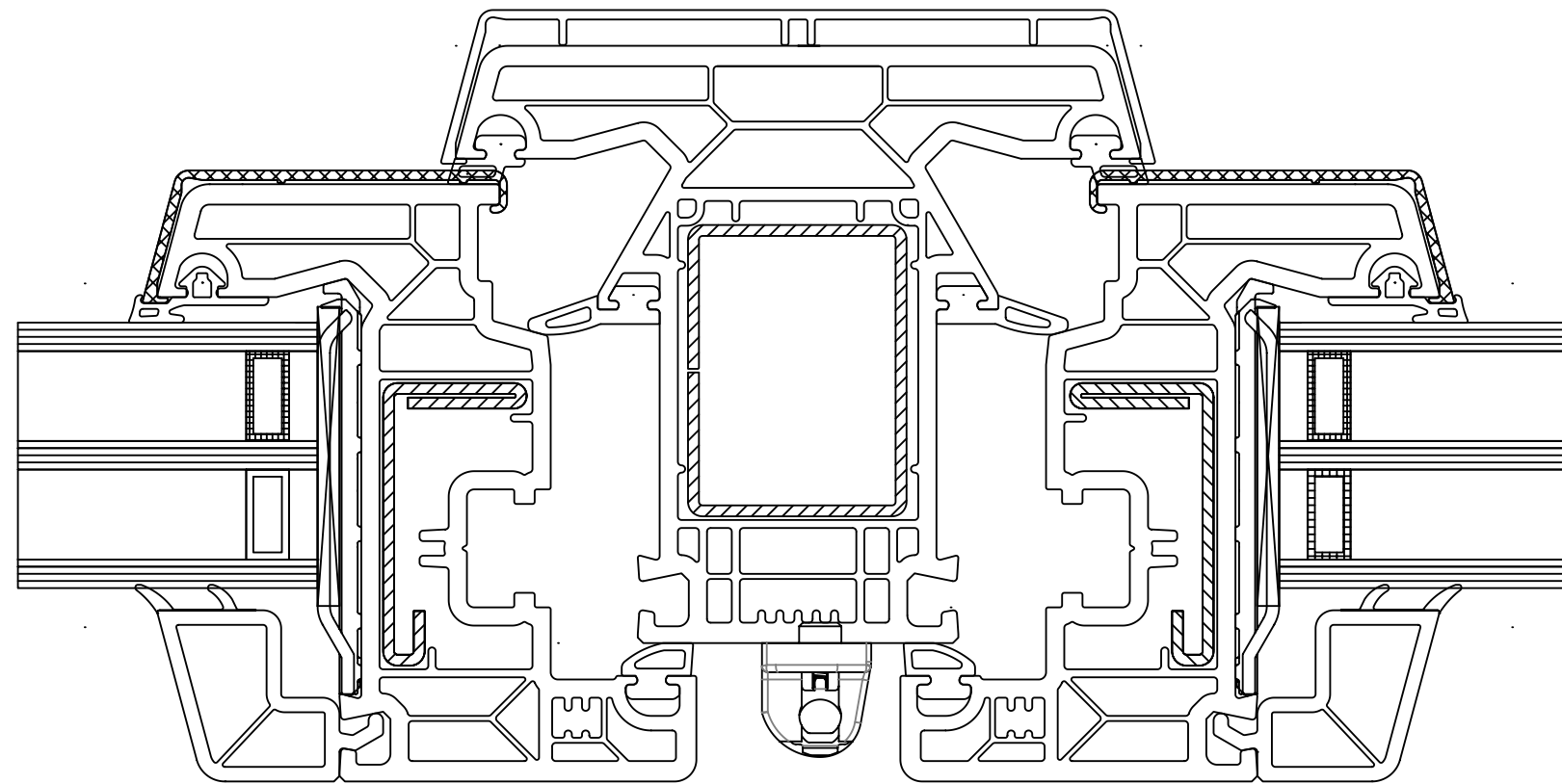
**SOFTLINE -MD 82mm**

Vantail 103.340  
Battue 102.314

Echelle  
1:1

21.09.2012

Soft-8130  
(Battue 74mm)



**SOFTLINE -MD 82mm**

**Vantail 103.340 + 104.358**

**Battue 102.316 + 104.357**

**Echelle  
1:1**

**08.05.2020**

**Soft-8150 alu  
(meneau 94mm)**